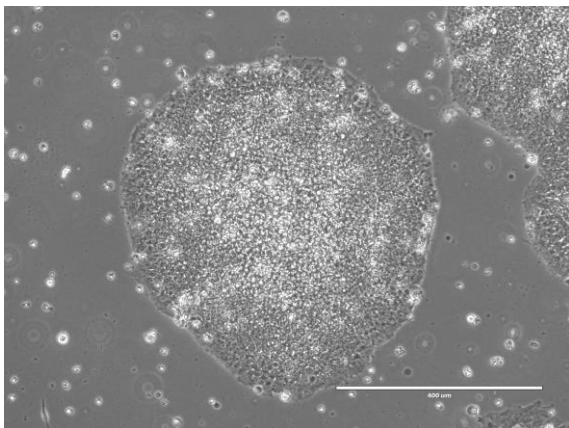
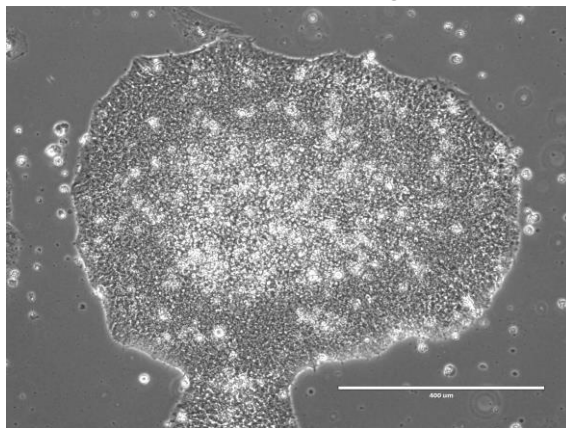


【 CiRA-j-1145 】 Morphology of iPSC colonies

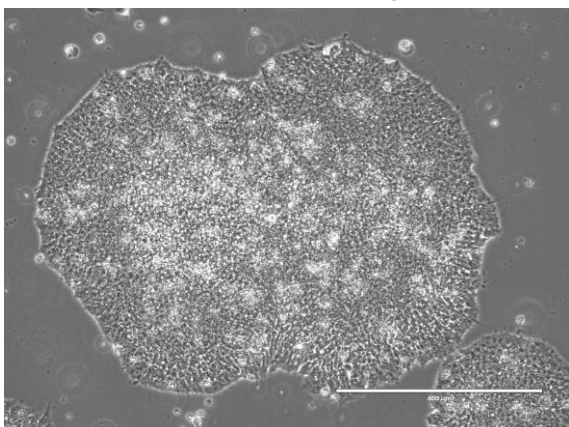
CiRA-j-1145-A: passage-3



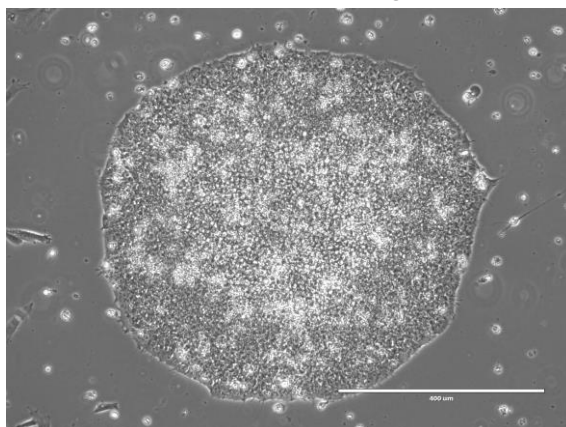
CiRA-j-1145-B: passage-3



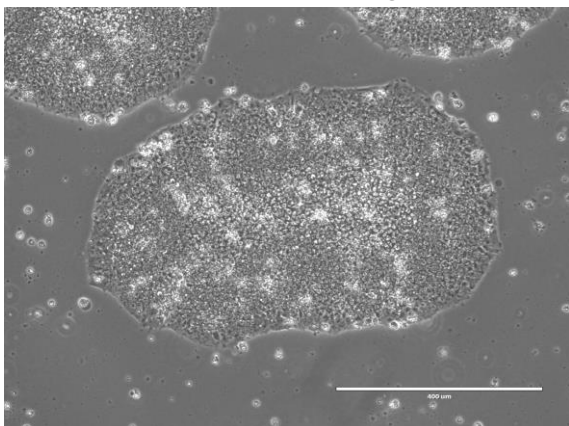
CiRA-j-1145-C: passage-3



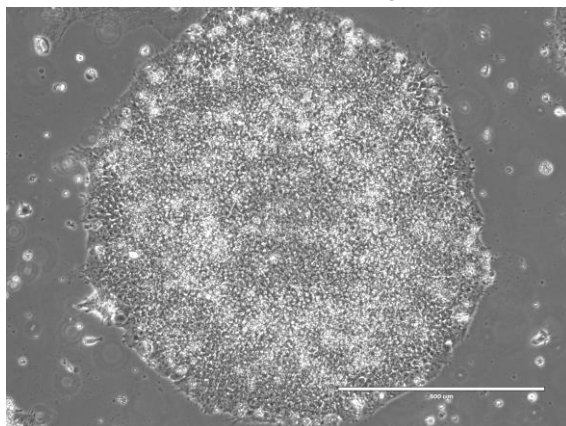
CiRA-j-1145-D: passage-3



CiRA-j-1145-E: passage-3



CiRA-j-1145-F: passage-3



(All images were captured at 4x magnification)